

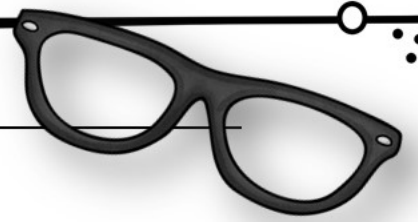
Comprehension Questions

Directions : Check your understanding by answering the questions below.
Write your answers in complete sentences.



1. What is pi?
2. What is unusual about pi?
3. Why might ancient people have been interested in figuring out pi?
4. Why do you think people are curious about finding all the digits of pi?
5. How were early pies similar to baking dishes?
6. Based on the context, what does the word *savory* mean when used to describe a type of pie?
7. Why should (or shouldn't) Pi Day be celebrated?
8. Think about some ways you use circles in your life. Are they important? Why or why not?
9. The symbol Π is shorthand for a larger concept. What other shortcuts do you use in your everyday life that represent a larger concept? These don't necessarily have to be something written!

Name _____



What's the Big Idea & How do you Know?

Imagine you are detective trying to solve a crime. How will you determine what happened, who committed the crime, and why? You will need evidence to prove your case.

When you read, you do the same thing. You are looking for evidence to support the main idea of the text.

When you look for textual evidence, you are locating facts, examples, or "anecdotal" information (anecdotes are stories that illustrate something) that supports the main idea. You may not always have all three types of evidence.

Demonstrate your understanding: Read the "March 14 – Pi Day" article. There are several big ideas in the selection. Choose one and then find textual evidence that supports it. Circle the type of evidence in the last column. An anecdote is a story that a writer uses to illustrate a point.

The main idea of the passage		
Evidence #1		Fact example anecdote
Evidence #2		Fact example anecdote
Evidence #3		Fact example anecdote

Reflection Question: Why is it important to find textual evidence?

Name _____

Looking at Technical Words and Phrases

The specific and special vocabulary that applies to a particular topic is referred to as technical language. For example, *mesa* has a special meaning when you are looking at land formations.

Technical language can be troublesome for students if they aren't familiar with the terms. It's important to understand any technical words or phrases in order to comprehend the text.

Demonstrate your understanding: As you read "March 14: Pi Day," pay attention to any technical words you come across. Write them in the graphic organizer below and determine what they mean and why it's important for you to understand that word.

Technical Word or Phrase	Meaning	Why is it important that I understand this word?

Reflection question: How does understanding technical language improve your understanding of a text?

